

SIMBOLOGÍA CUATERNARIO

Table with 2 columns: Símbolo and Descripción. Includes Quaternario units like Arenas-Limo, Grava-Toba, and Toba Boleíta.

TERCIARIO NEÓGENO

Table with 2 columns: Símbolo and Descripción. Includes Neogene units like Basalto, Basalto-Amesita, and Toba Boleíta.

CRETÁCICO SUPERIOR

Table with 2 columns: Símbolo and Descripción. Includes Cretaceous units like Lituia-Amesita and Caliza.

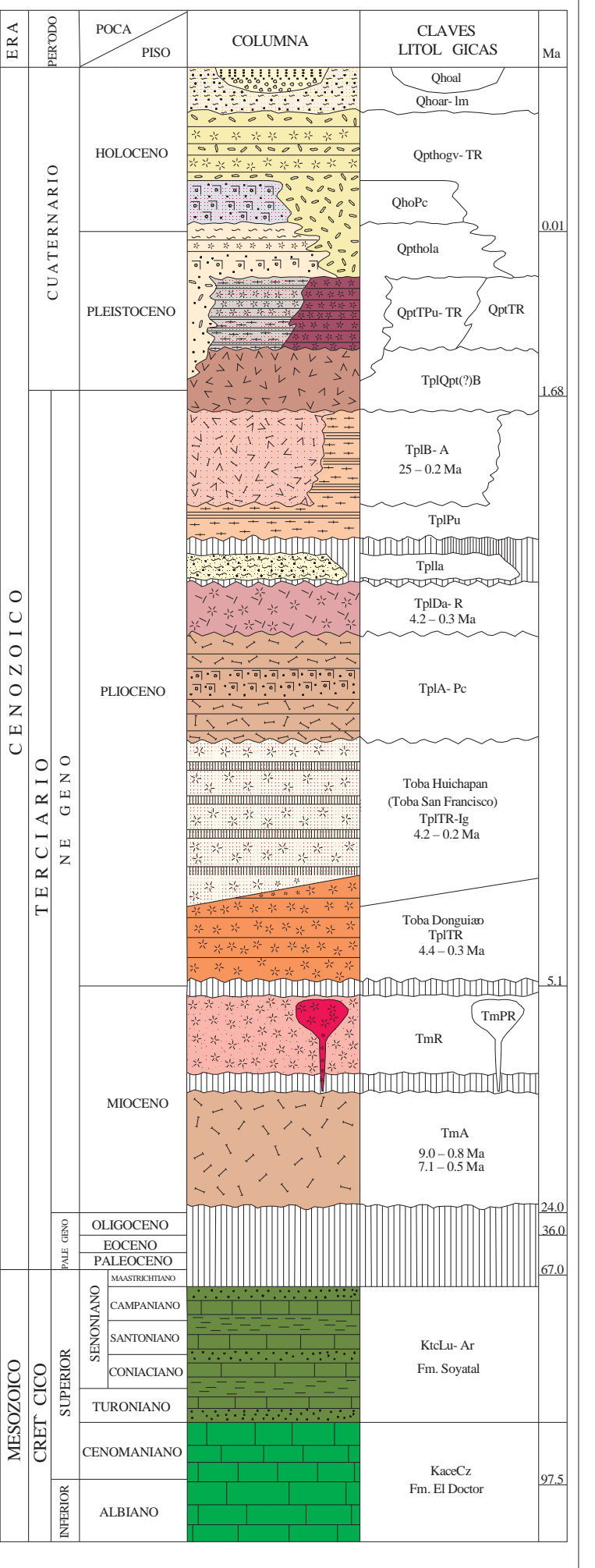
ROCAS ÍGNEAS INTRUSIVAS

Table with 2 columns: Símbolo and Descripción. Includes Intrusive igneous rocks like Porfírico Rodolfito.

ELEMENTOS ESTRUCTURALES

Table with 2 columns: Símbolo and Descripción. Lists structural features like faults, folds, and volcanic vents.

COLUMNA GEOLÓGICA



RESUMEN

Summary text describing the geological context, tectonic evolution, and mineral resources of the Huichapan region.

SÍMBOLOS MINEROS

Table with 2 columns: Símbolo and Descripción. Lists mining symbols for various types of mines and mineral banks.

TIPOS DE PLANTAS

Table with 2 columns: Símbolo and Descripción. Lists symbols for different types of plants and industrial facilities.

OTROS

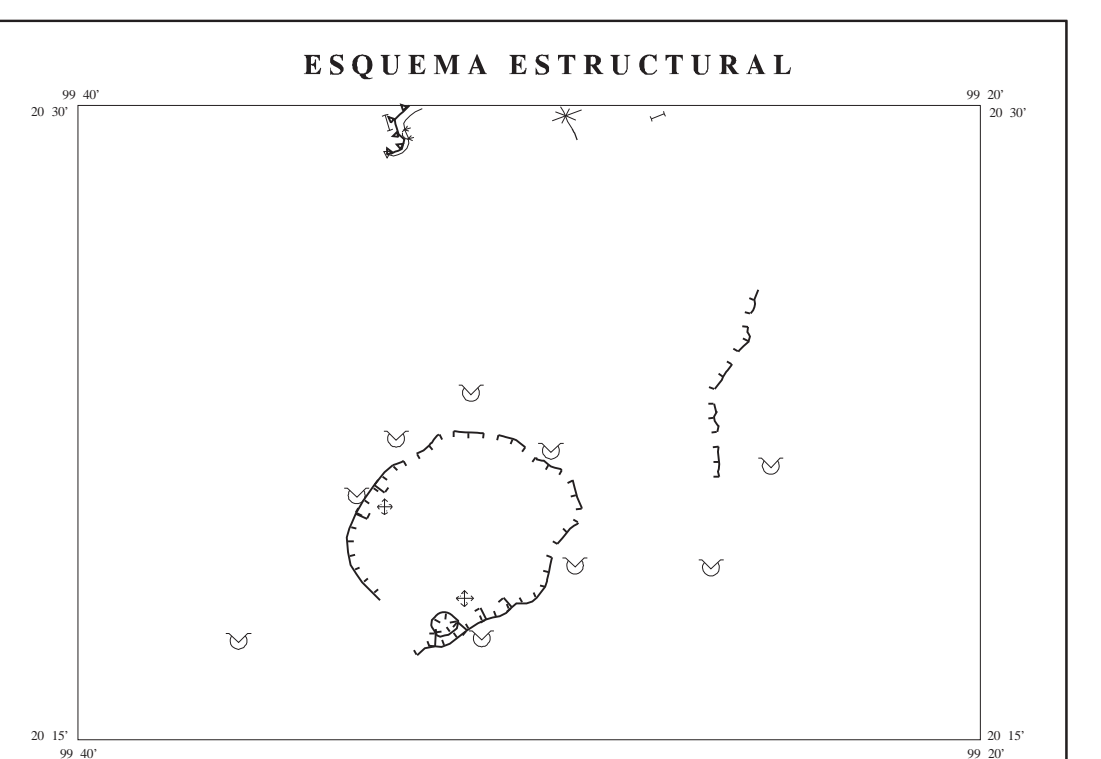
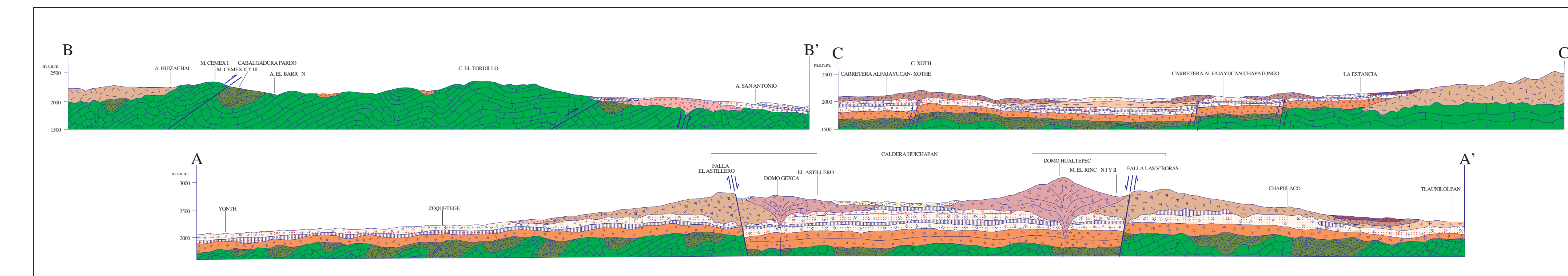
Table with 2 columns: Símbolo and Descripción. Lists other symbols for infrastructure and land use.

DEPÓSITOS MINERALES

Table with 2 columns: Símbolo and Descripción. Lists symbols for various types of mineral deposits.

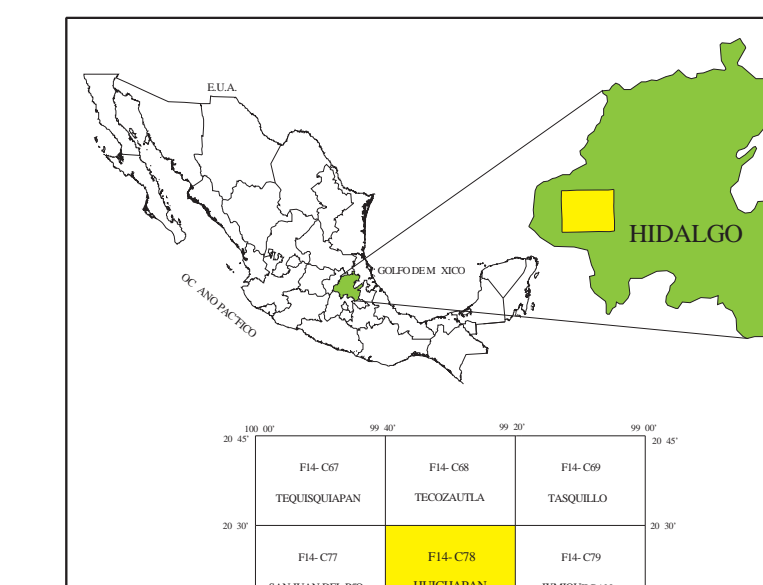
SÍMBOLOS TOPOGRÁFICOS

Table with 2 columns: Símbolo and Descripción. Lists symbols for topographic features like roads, rivers, and terrain contours.



ESCALA 1:50,000

KILOMETROS LOCALIZACIÓN



COORDENADAS, LOCALIZACIÓN, and other technical details regarding the map's projection and scale.

CARTA GEOLÓGICO-MINERA HUICHAPAN F14-C78 HIDALGO